

Chillingham

Public School



SUCCESS THROUGH TEAMWORK

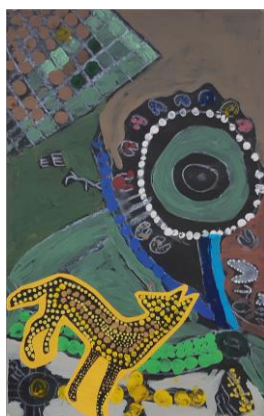


20 August 2020

Monsters, Myths and Mermaids!

Year 5 and 6 students completed the 'Monsters, Myths and Mermaids' theme with creating an articulated creature whose parts could move. They investigated types of monsters and mythological creatures and created their own version and characters. They needed to figure out the points of movement and attach the parts, using split pins. The artworks are very different from each other and reflect a little about their creators!

Year 3 and 4 completed their 'Indigenous Art' theme with the creative task of investigating Indigenous symbols and styles and then telling a story on paper, using these symbols. They completed the task by creating an animal totem they would wish for themselves to add to their composition. The results were very striking.



IMPORTANT DATES

28th August – Friday

Kindy 2021 Enrolment forms to be returned to school

4 September – Friday

Fathers' Day Stall

VISION STATEMENT

Our students are happy, literate lifelong learners. We empower them with the knowledge, skills and confidence enabling them to make a positive contribution to society. Chillingham Public School is a great school. Join us.

Dear Past,
thank you for
all the lessons.

Dear Future,
I am ready.

From the Principal's Desk

We are half way through the term already.. amazing.

This newsletter lists the new regulations that commenced for all NSW school yesterday 19 August. Information is from NSW Government COVID-Safe guidelines for NSW schools. They are as follows:

From Wednesday 19 August, all public schools in NSW will be required to adopt the changes to ensure school communities remain safe inside and outside the school gate.

- *Anyone with symptoms of COVID-19 is prohibited from returning to school until a negative test result has been reported.*

Under additional measures for Term 3:

- *Students must remain within their relevant class or year group to limit mixing.*
- *Schools must not travel outside their local community or zone, including between rural and regional areas.*
- *Interschool sport and zone carnivals are restricted to 100 people per venue and must be held in the local area.*
- *Spectators, including parents and carers, are not permitted within school grounds or at sporting events held during school hours.*
- *All group singing and or other chanting activities, as well as the use of wind instruments in group settings are not permitted.*
- *Dance activities and drama group work can continue under a COVID-19 Safety Plan.*
- *School formals, dances, graduation or other social events are not permitted. Schools may hold a Year 12 assembly at school without parents to recognise the completion of school or consider delaying events until later in the year.*
- *Students and staff required to support HSC students are permitted to undertake activities to meet their HSC requirements with COVID-19 safety measures in place.*
- *Organisations that use school buildings or grounds must have a COVID-19 safety plan in place and encourage strict compliance with that plan.*

The new restrictions will complement existing health advice for schools, including maintaining good hand hygiene inside and outside the classroom, physical distancing for adults and banning non-essential school visitors.

If you have any questions or concerns regarding the above please contact the school.

Next week we celebrate our SASS (School Administration and Support Staff). If you are in the school and you see Mrs Window, Mrs McMahon, Mr Prestwich and Miss Anna - let's say thanks to them for all they do.

Our school is part of a pilot program of the Community of School Trials involved in evaluating needs for Before and After School Care in the school communities. Attached is a letter explaining the process. (Please note – this letter has been forwarded to your email address so the survey can be submitted online).

Check-in assessment for Year 3 and 5 - Years 3 and Years 5 students will participate in a new check-in assessment over the coming weeks. The Check-in assessment is a NSW Department of Education reading and numeracy assessment available to support schools to assess and monitor Year 3 and 5 student learning following the period of learning from home. The results of this online assessment can supplement existing school practices to identify how students are performing in literacy and numeracy and to help teachers tailor their teaching more specifically to student needs. Both assessments will consist of 40 multiple choice questions and will be taken by all Year 3 and 5 students at our school.

The assessment will be scheduled for our: Year 5 students next week and Year 3 students in three weeks.

Vicki Roach,
Principal

On a Board"



Merit Award recipients

Sapphire, Peppa, Pippa, Calai, Vera and Marlee.



Beeeeres Knees recipients

Cooper, Tahlia, Lily and Marley



Happy Birthday

No birthdays in the school community this week

Canteen / P&C Notice Board

The next P&C meeting is Thursday 10 September at 1.30pm

The Father's Day stall will be held on Friday 4 September. This year it has been decided that the P&C will purchase the items for the stall, however, if you wish to donate items we are more than happy to receive them. Every student is able to purchase a gift (one per student) for their father and each gift is worth \$5. Mrs Window will oversee the stall on the day. If you have any concerns or questions please phone Mrs Window at school.

CANTEEN ROSTER

Friday 21 August

Volunteer: Kelly

Cake: Kelly, Lauren & Laura

Friday 28 August

Volunteer: Karen

Cake: Karen, Natasha & April

ENROLMENTS ARE OPEN FOR 2021 at Chillingham Public School

If you know of anyone who may be interested please ask them to contact the school.

For those who have enrolments forms please completed and return them to school before **Friday 28 August**



ADVERTISING



Joey's Nest
 Australian Native Flower Specialist
 Weddings & Events
 Jo Carey
 0401 927 201
 joey222@icloud.com
 www.joeysnest.com.au



Hair on HOPKINS
 Fully Equipped Home Hair Salon

Ladies cuts from \$30.00
 Men's cuts from \$15.00
 Kids cuts from \$10.00

Colours From: \$45.00
 Foils from \$50.00 (1/4 head)
 Toner from \$20.00

My name is Megan and I have been a hairdresser for over 20 years. I set up my salon here in Chillingham after selling my business at Tweed Heads which I owned for over 10 years. Now that all my children are at school I feel it's time for me to expand my clientele, I offer a professional friendly service in a private air conditioned room. I use only industry professional products, with my passion being hairdressing. I look forward to seeing you soon.

Contact Me:
 0429 833 234

98 Hopkins Creek Road, Chillingham

**The Laser, Skin &
 Beauty Specialist**

Beauty Salon
 Chillingham

Offering
 IPL/Laser Permanent hair Reduction
 IPL Pigmentation Removal
 Diathermy/Capillary removal
 Cosmetic Tattooing
 Waxing
 Tinting
 Nails
 Facials

Ph Kathy for appointment
 0427 047 138 02 6679 1054

Simone Ryan
 Contact: 0439 454 334

**Mobile
 Massage
 Therapy**

For your wellbeing...

\$60 for an hour
 \$40 for half an hour

Based in Chillingham




BLOOMWELL OT Mobile Paediatric Occupational Therapy NDIS Registered Provider

Supporting children up to 17 years old

- Fine and gross motor skills
- Cognitive skills
- Emotional skills / management
- Social skills
- Sensory processing
- Visual motor skills
- Visual perception
- Toileting and self-care

Servicing Regional Tweed Valley south to Ocean Shores & west to Kyogle
 Call us and discuss how we can support you.

Jane Ganser – Bach Occ. Therapy, AHPRA Registered, Member OTA
 Email: jane@bloomwell.com.au Mobile: 0428 422 346
 Web: www.bloomwell.com.au

Bedzzz
 tweed heads

Jaime & Allison Cramp
 Owners

28 Greenway Drive
 Tweed Heads NSW 2486

P: 07 5524 8842
 F: 07 5524 8802
 E: bedzzztweedheads@btgpond.com